

# MONTHLY MEMBERSHIP PROGRESS REPORT

LOCATION NEPAL

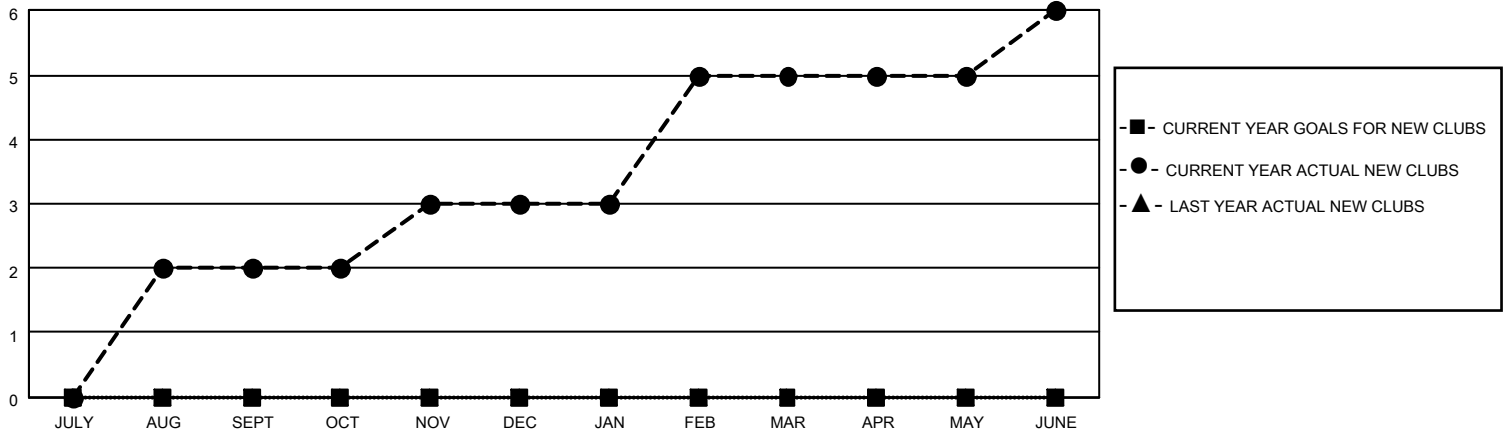
District 325 N

Results as of: 6/30/2023

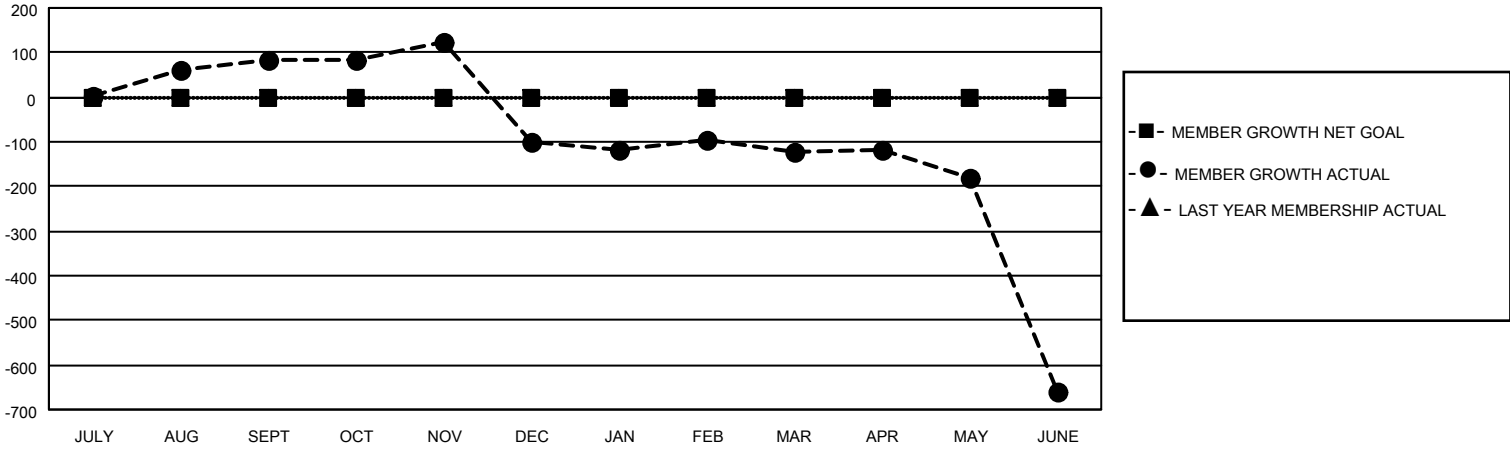
Clubs			
RESULTS FOR 2022-2023			
QUARTER	NEW CLUB GOAL	NEW CLUBS	DROPPED CLUBS
JULY/AUG/SEPT	0	2	1
OCT/NOV/DEC	0	1	6
JAN/FEB/MAR	0	2	3
APR/MAY/JUNE	0	1	15

Members			
RESULTS FOR 2022-2023			
QUARTER	MEMBER GROWTH NET GOAL	MEMBER GROWTH ACTUAL	DROPPED MEMBERS ACTUAL (including transfers)
JULY/AUG/SEPT	0	127	42
OCT/NOV/DEC	0	63	244
JAN/FEB/MAR	0	67	84
APR/MAY/JUNE	0	92	614

**GOALS AND ACTUAL NEW CLUBS CUMULATIVE**



**GOALS AND ACTUAL MEMBERS CUMULATIVE**



**DROPPED CLUBS: 25**

**56 CLUBS OF 138 ADDED 1 OR MORE NEW MEMBERS**

**GENDER DISTRIBUTION**

MALE	1,565 (72.02%)
FEMALE	608 (27.98%)
NON BINARY	0 (0.00%)
PREFER NOT TO ANSWER	0 (0.00%)

**DROPPED MEMBERS**

[CLICK HERE FOR CUMULATIVE MEMBERSHIP DATA](#)

DECEASED	1
CLUB CANCELLED	465
OTHER	518
<b>TOTAL</b>	<b>984</b>

TOTAL FAMILY UNIT MEMBERS 1,618

FAMILY MEMBERS PAYING HALF DUES 1,075